



# GAT MONTHLY MEMBERSHIP PROGRESS REPORT

Results as of: 1/31/2021

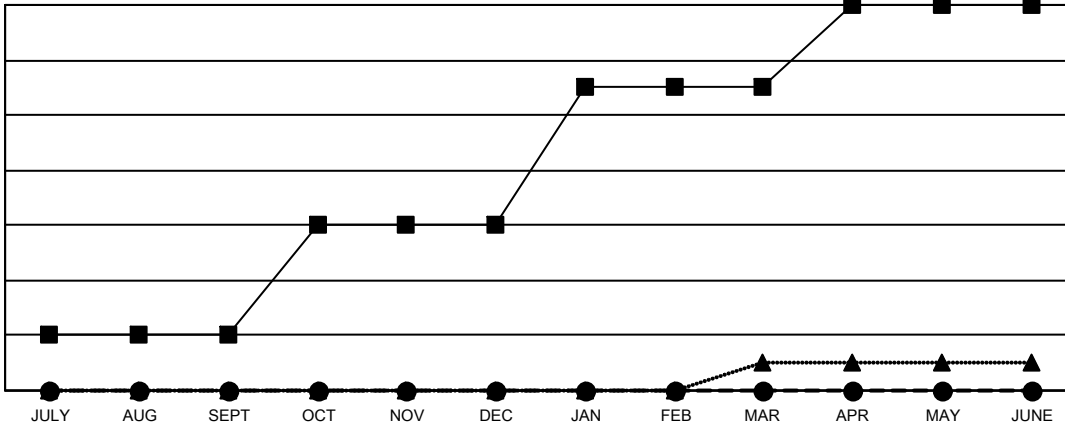
Multiple District 9

LOCATION: IOWA

Clubs			
RESULTS FOR 2020-2021			
QUARTER	NEW CLUB GOAL	NEW CLUBS	DROPPED CLUBS
JULY/AUG/SEPT	2	0	1
OCT/NOV/DEC	4	0	0
JAN/FEB/MAR	5	0	1
APR/MAY/JUNE	3	0	0

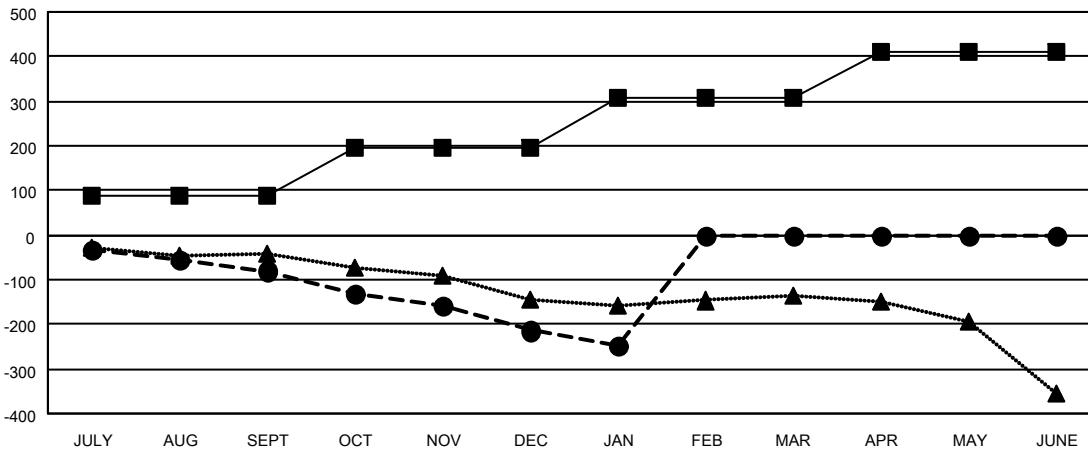
Members			
RESULTS FOR 2020-2021			
QUARTER	MEMBER GROWTH NET GOAL	MEMBER GROWTH ACTUAL	DROPPED MEMBERS ACTUAL (including transfers)
JULY/AUG/SEPT	88	123	185
OCT/NOV/DEC	108	85	208
JAN/FEB/MAR	110	27	59
APR/MAY/JUNE	105	0	0

GOALS AND ACTUAL NEW CLUBS CUMULATIVE



- - CURRENT YEAR GOALS FOR NEW CLUBS
- - CURRENT YEAR ACTUAL NEW CLUBS
- ▲ - LAST YEAR ACTUAL NEW CLUBS

GOALS AND ACTUAL MEMBERS CUMULATIVE



- - MEMBER GROWTH NET GOAL
- - MEMBER GROWTH ACTUAL
- ▲ - LAST YEAR MEMBERSHIP ACTUAL

**DROPPED CLUBS: 2**

88 CLUBS OF 307 ADDED 1 OR MORE NEW MEMBERS

GENDER DISTRIBUTION	
MALE	5,428 (73.25%)
FEMALE	1,982 (26.75%)

DROPPED MEMBERS	
DECEASED	91
CLUB CANCELLED	0
OTHER	361
<b>TOTAL</b>	<b>452</b>

[CLICK HERE FOR CUMULATIVE MEMBERSHIP DATA](#)

TOTAL FAMILY UNIT MEMBERS	1,495
FAMILY MEMBERS PAYING HALF DUES	756